



Flat

**37, SAILMAKERS  
COURT, LONDON,  
LONDON, SW6 2UX**

Per Month  
**£2,800**

Available: 6th January 2026

FEATURES



 2
  1
  2
  C

**Huddletons**

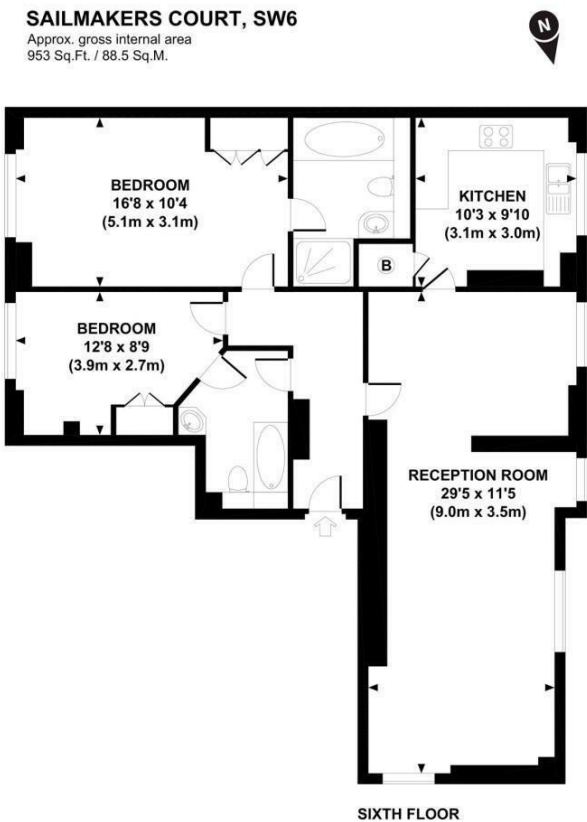
# 2 Bedroom Flat located in

A bright and well-presented two double bedroom apartment set within this superb riverside development, ideally positioned with stunning views over the River Thames.

The property offers spacious accommodation throughout and benefits from an abundance of natural light, making it an ideal home for professional sharers or a couple seeking a riverside lifestyle.

Located in the desirable Sands End area of Fulham, the apartment is within walking distance of the Harbour Club gym and the popular amenities along Wandsworth Bridge Road. The vibrant areas of Fulham Broadway, Fulham Road, King's Road and Chelsea are also close by, offering an excellent selection of boutiques, bars, cafés and restaurants.

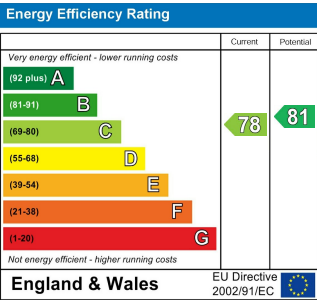
This is a fantastic opportunity to rent a riverside home in a sought-after West London location.



All measurements are approximate and for illustration purposes only as defined by the BCS Code of Measuring Practice © 2013. Drawing: James Design www.jamesdesigns.com 020 7610 9953

Call us on  
**0207 205 4411**  
  
**info@huddletons.com**  
**<http://www.huddletons.com>**

**Council Tax Band**  
**C**



Agents Note: Whilst every care has been taken to prepare these particulars, they are for guidance purposes only. All measurements are approximate and are for general guidance purposes only and whilst every care has been taken to ensure their accuracy, they should not be relied upon and potential buyers are advised to recheck the measurements.

**Huddletons**